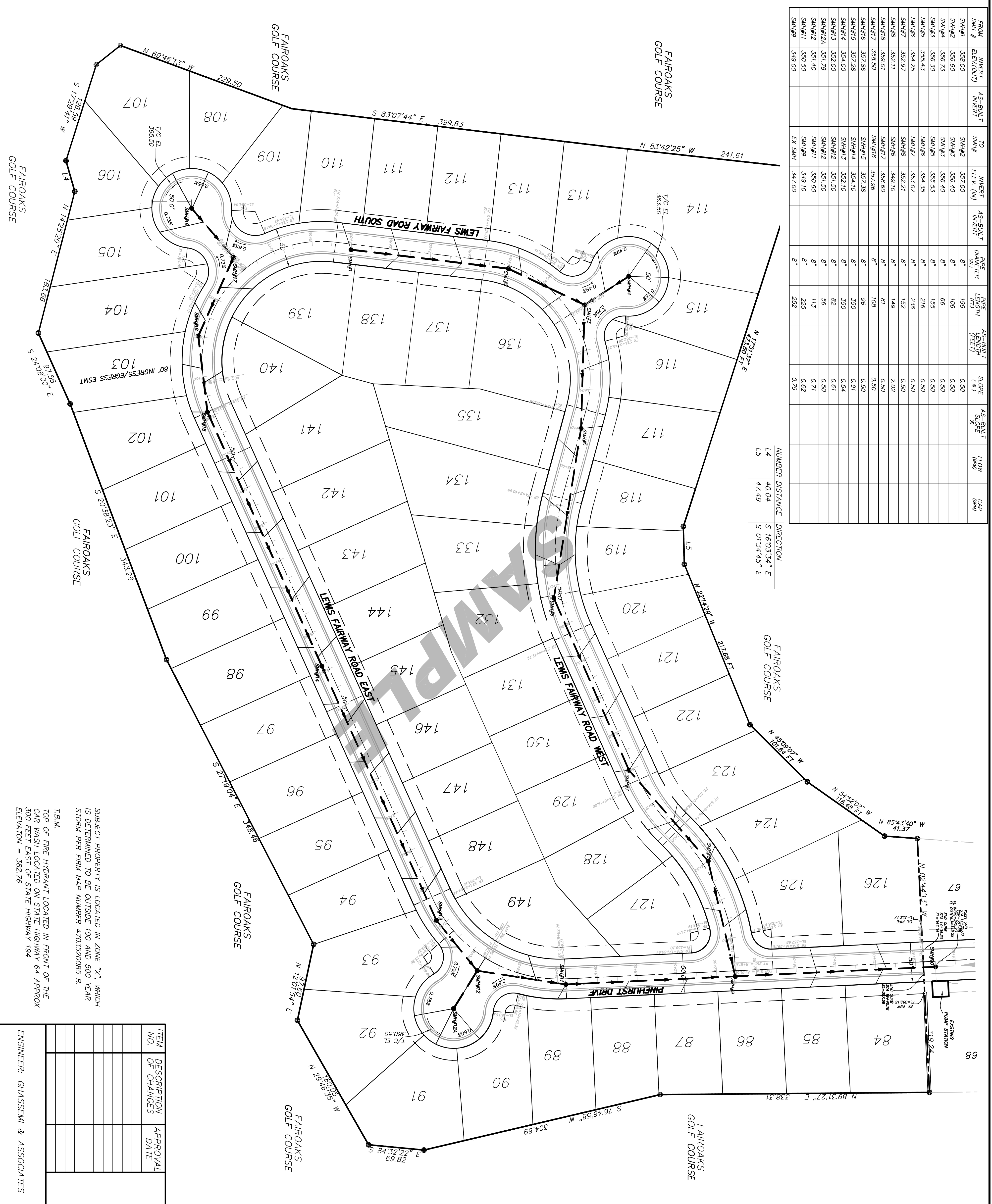
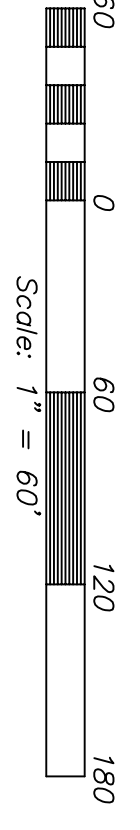
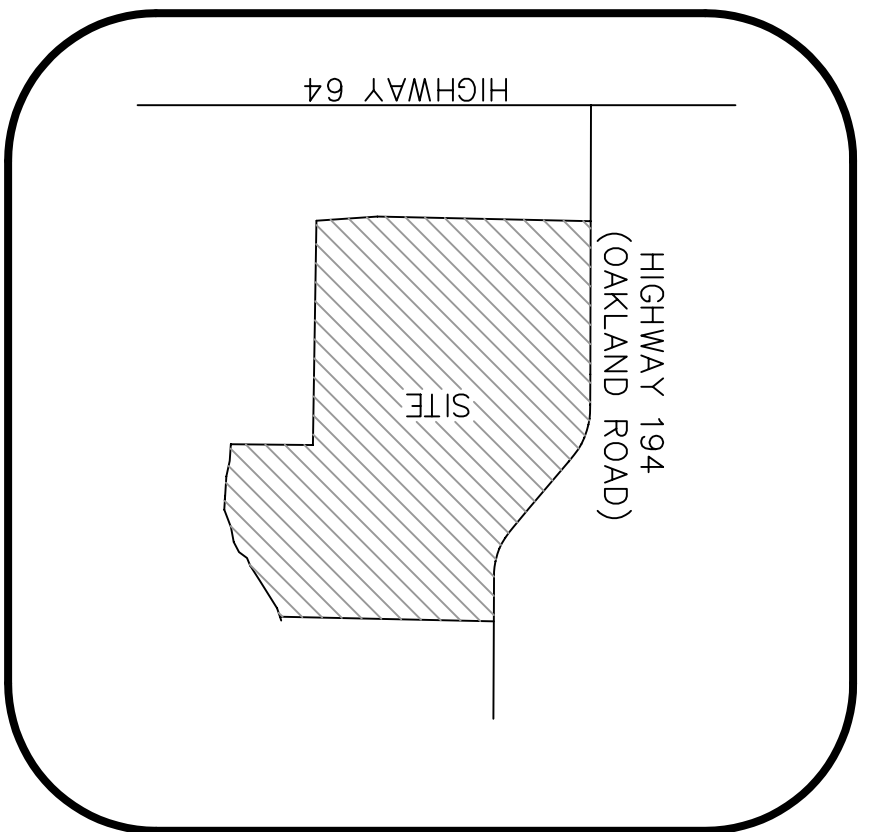


FROM SM#	INVERT ELEV.(OD)	AS-BUILT INVERT	TO SM#	INVERT ELEV.(IN)	AS-BUILT INVERT	PIPE DIAM. (IN)	PIPE LENGTH (FOOT)	AS-BUILT SLOPE (%)	AS-BUILT SLOPE (%)	FLOW (GPM)	CAP (GPM)
SM#1	358.00		SM#2	357.00		8"	199	0.50			
SM#2	356.90		SM#3	356.40		8"	106	0.50			
SM#3	356.23		SM#4	356.40		8"	66	0.50			
SM#4	356.30		SM#5	355.53		8"	155	0.50			
SM#5	355.45		SM#6	354.55		8"	216	0.50			
SM#6	354.25		SM#7	353.07		8"	236	0.50			
SM#7	352.97		SM#8	352.21		8"	192	0.50			
SM#8	352.11		SM#9	349.10		8"	149	2.02			
SM#9	358.01		SM#10	358.60		8"	81	0.50			
SM#10	357.86		SM#11	357.96		8"	108	0.50			
SM#11	357.28		SM#12	357.28		8"	96	0.50			
SM#12	354.00		SM#13	352.10		8"	350	0.54			
SM#13	352.00		SM#14	351.50		8"	82	0.61			
SM#14	351.78		SM#15	350.60		8"	56	0.50			
SM#15	350.40		SM#16	350.60		8"	113	0.71			
SM#16	350.50		SM#17	349.10		8"	225	0.62			
SM#17	349.00		SM#18	347.00		8"	252	0.79			

NUMBER/DISTANCE   DIRECTION		
L4	40.04	S 16°03'34" E
L5	47.49	S 01°34'45" E



GENERAL NOTES  
ALL SEWER SERVICES SHALL BE BROUGHT TO EXTEND 2' ABOVE GROUND.



SUBJECT PROPERTY IS LOCATED IN ZONE "X", WHICH IS DETERMINED TO BE OUTSIDE 100 AND 500 YEAR STORM PER FRM MAP NUMBER 4703520085 B.  
T.B.M.  
TOP OF FIRE HYDRANT LOCATED IN FRONT OF THE CAR WASH LOCATED ON STATE HIGHWAY 64 APPROX 500 FEET EAST OF STATE HIGHWAY 194  
ELEVATION = 382.76

ITEM NO.	DESCRIPTION OF CHANGES	APPROVAL DATE

ENGINEER: GHASSEMI & ASSOCIATES

**SANITARY SEWER PLAN**  
OAKLAND, FAYETTE COUNTY, TENNESSEE

DIVISION OF ENGINEERING  
SHEET 1 OF 1  
DESIGN BY: GHASSEMI & ASSOC. DATE: SEPT 2004 BOOK: 1" = 60'  
DESIGN BY: M. GHASSEMI, P.E., R.S. DATE: SEPT 2004 SCALE: 1" = 60'  
REVIEWED  
DATE

DATE